

Discovery of an Isolated Compact Object at High Galactic Latitude

R. E. Rutledge¹, D. B. Fox², & A. H. Shevchuk²

ABSTRACT

We report discovery of Calvera, a compact object at high Galactic latitude. We initially identified Calvera as a *ROSAT* All-Sky Survey Bright Source Catalog X-ray source, 1RXS J141256.0+792204, statistically likely to possess a high X-ray to optical flux ratio. Further observations using *Swift*, Gemini-North, and the *Chandra* X-ray Observatory refined the source position and confirmed the absence of any optical counterpart to an X-ray to optical flux ratio of $F_X(0.1\text{--}2.4\text{ keV})/F_V > 5100$ (3σ). Interpretation of Calvera as a typical X-ray-dim isolated neutron star would place it at $z \approx 6.7$ kpc above the Galactic disk – in the Galactic halo – implying that it either has an extreme space velocity ($v_z \gtrsim 6700\text{ km s}^{-1}$) or has failed to cool according to theoretical predictions. Interpretations as a persistent anomalous X-ray pulsar, or a “compact central object” present conflicts with these classes’ typical properties. We conclude the properties of Calvera are most consistent with those of a nearby (150 to 560 pc) radio pulsar, similar to the radio millisecond pulsars of 47 Tuc, with further observations required to confirm this classification. If it is a millisecond pulsar, it would be among the X-ray brightest millisecond pulsars, and only the third northern hemisphere millisecond pulsar at such close distance, making it an interesting target for X-ray-study, a radio pulsar timing array, and *LIGO*.

Subject headings: X-rays — neutron stars — X-ray sources: individual: 1RXS J141256.0+792204

¹Department of Physics, McGill University, 3600 rue University, Montreal, QC, H3A 2T8, Canada; rutledge@physics.mcgill.ca

²Department of Astronomy & Astrophysics, 525 Davey Laboratory, Pennsylvania State University, University Park, PA 16802, USA; dfox@astro.psu.edu, ahs148@psu.edu

1. Introduction

During the past decade, seven isolated neutron stars (INSs), exhibiting no detectable radio pulsar activity, have been discovered in nearby regions of our Galaxy via X-ray surveys. These INSs exhibit thermal emission spectra with peak energies in the far-ultraviolet or soft X-ray, from atmospheres that are thought to be amenable to theoretical modeling (e.g., Lattimer & Prakash 2004; Page & Reddy 2006). As such, they are promising candidates for precision radius measurements via X-ray spectroscopy – measurements that ultimately aim to constrain theories of the nuclear equation of state.

We are currently pursuing a long-term project to identify new isolated neutron stars from within the *ROSAT* All-Sky Survey Bright Source Catalog (BSC; Voges et al. 1999) using short ~ 1000 s observations with NASA’s *Swift* satellite (Gehrels et al. 2004). Although the scientific focus of the *Swift* mission is on gamma-ray burst (GRB) studies, its autonomous pointing capability, rapid one degree per second slewing, and joint X-ray + UV/optical instrumentation make it an excellent platform for such large-scale surveys (Fox 2004), as well as for generic targets of opportunity (TOOs).

We select our targets for *Swift* using statistical techniques of catalog cross-correlation (Rutledge et al. 2003), comparing sources from the BSC to the USNO-A2.0, IRAS point-source, and NVSS catalogs, and selecting sources that are likely, on general grounds, to possess high $L_X/L_{\text{opt/IR/radio}}$ (see also Rutledge et al. 2000). Our candidate INS sources are then observed with *Swift* on a time-available basis as “fill-in targets,” with a low priority that is guaranteed not to preempt GRB and time-sensitive TOO observations.

Before discussing the results of our survey, we note that the term “isolated neutron star” (INS), although it appears generic, has in fact been adopted to refer exclusively to the seven known non-radio pulsar, non-magnetar, non supernova-remnant associated neutron stars. Since we will be selecting targets on the basis of a high X-ray to optical flux ratio, $F_X(0.1\text{--}2.4\text{ keV})/F_V$, which admits these several types of compact object into our sample, we find it necessary to define a more inclusive term: the “isolated compact object” or ICO. The ICO is an object demonstrated to have a sufficiently high $F_X(0.1\text{--}2.4\text{ keV})/F_V$ that its nature as a compact object is assured, with the only remaining question being what type of compact object it is – and an INS being one such possibility.

In this paper we discuss the first ICO (and candidate INS) to be identified from our survey, 1RXS J141256.0+792204. In §2, we present our suite of observations of this source, which demonstrate an X-ray to optical flux ratio $F_X(0.1\text{--}2.4\text{ keV})/F_V > 5100$, sufficient to establish it as a compact object. Given its unique set of properties, we rechristen the source Calvera, and in §3, discuss its properties in relation to known compact object classes. Estab-

lishing a preferred interpretation, while challenging in the absence of further observations, proves to be a useful exercise, casting light on larger questions related to the nature of the known populations of isolated compact objects. Our current state of knowledge and best interpretation of Calvera are then presented in §4.

2. Observations & Analysis

We observed the Bright Source Catalog source 1RXS J141256.0+792204 with the *Swift* satellite beginning at 01:25 UT on 25 August 2006. The single observation, extending over two satellite orbits, yielded 1.9 ksec of simultaneous exposure with the satellite’s X-ray Telescope (XRT; Burrows et al. 2003) and Ultraviolet/Optical Telescope (UVOT; Roming et al. 2000) instruments. UVOT observations were taken exclusively through the UVM2 filter, with filter transmission peaking at 220 nm, and XRT observations were in Photon Counting mode. We reduced the data using a custom pipeline derived from official mission data analysis tools (HEASOFT, v6.2), with XRT event grades 0–12 accepted for analysis.

The *Swift* XRT data recover the bright X-ray source 1RXS J141256.0+792204, allow an improved estimate of the source position, and provide a broadband X-ray spectrum. This X-ray spectrum (Table 1) is acceptably described by an absorbed blackbody, with $kT_{\text{eff}}=220_{-40}^{+45}$ eV. Alternatively, a power-law spectral model acceptably fits the data, with a best-fit photon power-law index of $\alpha = 3.2_{-0.4}^{+0.5}$. The simultaneous UVOT observation reveals no 220 nm counterpart to a two-sigma limiting magnitude of 21.6 mags, or 1.27×10^{-17} erg cm⁻² s⁻¹.

The high X-ray to UV flux ratio established by the *Swift* observations, combined with limits on the brightness of any optical (DSS) or near-infrared (2MASS) counterparts from archival surveys, led us to pursue Director’s Discretionary Time observations with the Gemini telescope. Our subsequent Gemini North + Gemini Multiobject Spectrograph (GMOS-N) observations were taken in queue-observing mode as 4×600 s images with mean epoch 14:46 UT on 22 Dec 2006. Data were bias-subtracted, flat-fielded, fringe-subtracted, registered, and combined with cosmic-ray rejection using Gemini pipeline software and official calibration products; the photometric zero-point was derived by reference to ten unsaturated USNO-B1.0 catalog stars in the image. Our resulting image of the region of sky around the source reveals three potential optical counterparts with g -band magnitudes $g \lesssim 25$ mag, as shown in Fig. 1 – note that this image has been smoothed with a PSF-like Gaussian kernel of FWHM 1.2’’ to reveal faint sources.

In order to eliminate the possibility of associating 1RXS J141256.0+792204 with these

faint optical sources, we obtained a 2.1ksec DDT observation with the *Chandra*/HRC-I (Murray et al. 1998). A wide-field (imaging) observing mode, which has degraded fast-timing capabilities, was selected to include within the field-of-view an unrelated X-ray point source (SWIFT J141055.1+791309), also detected in our *Swift* XRT observation. This second source, using *Chandra* blind-pointing astrometry, lies $\sim 3.6''$ from a $J = 9.83(1)$ magnitude stellar object, 2MASS J14105565+7913075. The probability of a $J < 9.83$ mag source lying $3.6''$ or closer to the X-ray position by chance, based on the local sky density of such objects, is 2×10^{-5} , and we therefore associate the X-ray and 2MASS sources. Using this association to correct the *Chandra* astrometry yields the X-ray position given in Table 1, with uncertainty dominated by the statistical uncertainty in the position of SWIFT J141055.1+791309.

Figure 1 displays the X-ray localization for 1RXS J141256.0+792204 in the context of our Gemini g -band image. The nearest point source, southeast of the ellipse, has $g = 24.8$ mag and is excluded as a counterpart with $>99.4\%$ confidence. We therefore detect no g -band counterpart to a 3σ limit of $g > 26.3$ mag, or $F_g < 0.11 \mu\text{Jy}$ at 4750 \AA . The expected extinction is $A_g = 0.18$ mag towards the source, as estimated from Galactic extinction maps as well as the source’s X-ray spectrum. As the g and V -band zero points are the same, we find an extinction-corrected X-ray to optical flux ratio of $F_X(0.1\text{--}2.4 \text{ keV})/F_V > 5100$ for 1RXS J141256.0+792204.

A power density spectrum finds no evidence for periodicity at any frequency between 4.66×10^{-4} and 1024 Hz ¹ with weak limits on % root-mean-squared variability of $<41\%$, high compared with detected periodicities from known INSs (Durant & van Kerkwijk 2006). Comparing the spatial distribution of events in the HRC-I focal plane to the distribution expected for a point source with the spectrum of 1RXS J141256.0+792204, using an 85,000-photon ChaRT simulation (Carter et al. 2003), indicates that the source remains unresolved at sub-arcsecond *Chandra* resolution. Our 90%-confidence upper limits on the fractional contribution from any resolved component are $<16\%$ for a resolved component with Gaussian FWHM of 1 arcsec, and $<10\%$ for a resolved component with Gaussian FWHM $\gtrsim 5$ arcsec.

3. Discussion

The X-ray to optical flux ratio of 1RXS J141256.0+792204, $F_X(0.1\text{--}2.4 \text{ keV})/F_V > 5100$, is comparable to published limits that have accompanied the discovery of several INSs: 1RXS J185635.1–375433 ($F_X/F_V > 7000$, Walter et al. 1996), RX J1605.3+3249 ($F_X/F_V \geq 10^4$,

¹However, note the decreasing sensitivity of the HRC-I data at high frequency; <http://cxc.harvard.edu/cal/Hrc/timing.html>

Motch et al. 1999), 1RXS J130848.6+212708 ($F_X/F_V > 12000$, Schwope et al. 1999), and 1RXS J214303.7+065419 ($F_X/F_V > 10^3$, Zampieri et al. 2001). In all cases the extreme value of F_X/F_V was used to exclude all non-compact object source classes. Indeed, all these sources have subsequently been confirmed as INSs, and no counterexamples – sources identified as ICOs on the basis of F_X/F_V and subsequently demonstrated not to be compact objects – exist in the literature. The fact that high F_X/F_V , sometimes coupled with detection of X-ray pulsations, is used to identify INSs (Walter et al. 1996; Walter & Matthews 1997; Haberl et al. 1997; Motch et al. 1999; Schwope et al. 1999; Zampieri et al. 2001), and that none has yet been shown to be another class of source, argues for the robustness of this approach. We conclude that 1RXS J141256.0+792204 is a new ICO and candidate INS, for which we adopt the name “Calvera.”

With neither a direct distance measurement nor a proposed association for Calvera, however – and without high signal-to-noise X-ray spectroscopy to confront emission models – our discussion of the physical properties of the source must begin by exploring the range of possible emission models, accepting that both the spectral form and emitting area are largely unconstrained at present. We will therefore discuss each possible model for Calvera in turn: isolated neutron star, magnetar, compact central object, or radio pulsar.

3.1. Classifying Calvera

In this section, we consider four possible compact object classifications. In doing so, it will be useful to refer to two figures. In Figures 2 and 3 we compare the X-ray luminosities, thermal blackbody radii (R_{bb}) and effective temperatures (kT_{eff}) for four classes of compact objects – INSs, magnetars, MSPs and CCOs – with Calvera. Here, the luminosities for the CCOs (Pup A, Hui & Becker 2006; G266.1-1.2, Pavlov et al. 2001; Cas A, Pavlov et al. 2000; G330.2+1.0, Park et al. 2006) and INSs (from Haberl 2005 and references therein) are the thermal bolometric luminosities. We use the bolometric thermal luminosities of the MSPs in 47 Tuc (Bogdanov et al. 2006) as indicative of those in the field. Magnetar luminosities (Durant & van Kerkwijk 2006; Munro et al. 2007) are in the 2–10 keV band (bolometric luminosities will be greater).

Before attempting to classify Calvera within the context of these two figures, and their corresponding source populations, we make a general observation. The CCOs, magnetars and INSs are all thought to be thermally powered (i.e., due to core and crustal cooling, including effects of magnetic field decay; Arras et al. 2004). These classes occupy different areas of the (kT_{eff} , R_{bb}) diagram. The youngest objects (CCOs, with the object in Westerlund 1 being the notable exception; Munro et al. 2006) are located in the lower right (high

kT_{eff} , low R_{bb}), older objects (magnetars) are in the upper right (high kT_{eff} , high R_{bb}), and the oldest objects (INSs) are in the upper-left (low kT_{eff} , high R_{bb}). This may suggest a population synthesis model in which individual objects evolve with time through the (kT_{eff} , R_{bb}) diagram. Although this is speculative – and we leave detailed consideration to future work – for our present purposes it is sufficient to point out that these three classes of sources, plus the MSPs of 47 Tuc, occupy different areas of the (kT_{eff} , R_{bb}) and (R_{bb} , L_X) diagrams. The diagrams are therefore a useful means to compare the properties of Calvera to those of each class of compact object.

In the following sections, we compare Calvera’s properties with the typical source properties of known classes of compact objects which have been identified among field X-ray sources. The alternative is that Calvera has unique properties – for example, an R_{bb} or L_X unlike those of previously identified classes, perhaps due to a different atmospheric composition, magnetic field configuration, or object size, which we call the “It Can Be Any Size” hypothesis (ICBAS). The implication of the ICBAS hypothesis is that no statement about Calvera’s distance (and thus luminosity or R_{bb}) can be made. The ICBAS hypothesis cannot be falsified in the absence of a distance measurement; we therefore do not discuss it further.

3.1.1. *Isolated Neutron Star*

Since the observational approach used to classify Calvera is identical to that of the observationally homogeneous class of INSs – the so-called Magnificent Seven (Haberl 2006) – one might expect that Calvera shares observational properties with this class. As we show in this section, the properties of Calvera diverge from the known INSs.

Despite deep observations of the seven INSs with *Chandra* and *XMM-Newton*, the emergent X-ray spectra of objects in this class are not well understood. The spectrum of the brightest one, 1RXS J185635.1–375433, is accurately described by a blackbody in the X-ray passband (Burwitz et al. 2003), but its optical emission, while also thermal, requires a second blackbody component with a lower temperature and larger emission area (Pons et al. 2002). The only proposed X-ray spectrum which is consistent with both X-ray and optical spectra is composed of an optically thin layer of magnetized hydrogen (Ho et al. 2007). Other INSs also display thermal spectra in the X-ray passband.

Modeling the X-ray spectra of all INSs as thermal blackbodies of identical emission area ($R_{\text{bb}}=d T_{\text{eff}}^{-2} \sqrt{(\text{B.C.}) F_X/\sigma}$, where d is source distance, F_X is the 0.1–2.4 keV flux, B.C. is the bolometric correction, σ is the Stefan-Boltzman constant), we normalize the INS distances to the parallax distance $d = 167_{-12}^{+18}$ pc for 1RXS J185635.1–375433 Kaplan et al. 2007, while

noting that this recent result is larger than previous derived distances (Walter & Lattimer 2002; Kaplan et al. 2002). The resulting inferred luminosities and three-dimensional locations of the seven known INSs, and Calvera, are given in Table 2, and displayed in Fig. 4.

While our approach assumes R_{bb} is identical for all INSs, this assumption may not be correct: e.g., compare the range of R_{bb} values measured for various magnetars (Durant & van Kerkwijk 2006; 2–10 km – a factor of 5). It nonetheless is consistent with the newly-measured parallax distance for the INS RX J0720.4–31225 to the level of accuracy required for the present comparison (parallax distance $d = 360_{-90}^{+170}$ pc and blackbody distance $d \approx 500$ pc; Kaplan et al. 2007).

Calculated in this way, all but one previously-known INS have distances from the midplane of the Galactic disk $|z| < 0.5$ kpc (the exception is 1RXSJ 130848.6+212708, $z = 1.3$ kpc). Under the same interpretation Calvera’s distance is $d = 11.1$ kpc from the Sun, and $z = 6.7$ kpc from the plane of the disk, with Galactocentric distance $R_c = 16.3$ kpc, placing it firmly out of the disk and in the Galactic halo. No other isolated neutron stars are known in the halo, although it seems likely that at least some radio pulsars – whose distance estimates make use of the free electron density of the ISM, dominated by the disk component – populate the halo (Manchester et al. 2005). The inferred luminosity of Calvera is then L_X (0.1–2.4 keV) = 1.2×10^{34} erg s⁻¹ – an order of magnitude greater than the next most-luminous INS (Fig. 2), due to the high kT_{eff} of Calvera.

This location leads to a conundrum. The interstellar medium (ISM) in the halo is too sparse to power Calvera’s X-ray luminosity by accretion. If the source is then powered by remnant heat from the supernova which produced it, then standard cooling curves require a cooling age $\tau_c < 10^6$ yr old (Page et al. 2006) during which time it must travel at velocity perpendicular to the plane v_Z a distance of at least $z = v_Z \tau_c$; its distance from the plane then requires $v_Z > 6700$ km s⁻¹, greater than has been previously observed for any NS. Alternatively if the INS is travelling at a more usual $v_Z = 380$ km s⁻¹ (Faucher-Giguère & Kaspi 2006), that requires a cooling time of $\tau_c > 17$ Myr, which cannot be accommodated by either cooling of standard NSs (Page et al. 2004) or of highly magnetized ones (Arras et al. 2004). Thus, the INS hypothesis for Calvera leads to conclusions which challenge existing theory.

While high proper-motion is sometimes used to demonstrate proximity of an astronomical object, one cannot exclude the distant, standard-cooling INS hypothesis with a high proper-motion measurement in this case. This is because a more distant INS (out in the halo) requires a proportionately greater $v_Z (\geq d \sin(b)/\tau_c)$. The projection of this velocity across the line of sight results in a distance-independent proper motion $\mu = \sin(b) \cos(b)/\tau_c$; for Calvera, this is $\mu = 100$ mas yr⁻¹ for $\tau_c = 10^6$ yr, independent of Calvera’s distance.

3.1.2. Magnetar

While the observation of a slow pulse period, $P \approx 6$ s, and a rapid spin-down rate (for an AXP identification), or alternatively a burst of gamma-rays (for an SGR identification), would be required to demonstrate a magnetar nature for Calvera, neither possibility can be ruled out with the current set of observations. We thus consider the hypothesis that Calvera is a magnetar.

Recent work has identified a tight clustering of the maximum persistent 2–10 keV X-ray luminosities of magnetars near $\sim 1.3 \times 10^{35}$ erg s⁻¹ – making them, in a sense, X-ray standard candles (Woods & Thompson 2006; Durant & van Kerkwijk 2006). Magnetar X-ray spectra (0.1–10 keV) can be described by a soft blackbody ($kT_{\text{eff}} = 0.41$ – 0.63 keV) with a power-law dominating at higher energies (power-law photon index $\alpha = 2.0$ – 4.5). While the low signal to noise of our *Swift* XRT spectrum of Calvera does not allow demonstration of multiple spectral components, a single power-law fit across 0.5–10 keV is expected to overestimate the 2–10 keV flux, and hence underestimate the source distance according to this relation. Our best-fit single power-law flux (Table 1), assuming the standard-candle luminosity derived by Durant & van Kerkwijk (2006) for Calvera, yields a distance $d = 116$ kpc, and a height above the Galactic disk of $z = 70$ kpc. This would imply an even more extreme space velocity/lifetime (large $v_Z \tau_c$) conundrum than the INS hypothesis considered above.

Alternatively, if (contrary to current evidence) we consider the 2–10 keV luminosity of magnetars to be a free parameter, then we note that known magnetars (Durant & van Kerkwijk 2006; Munro et al. 2006) are all located within $|z| < 0.1$ kpc of the Galactic plane. Placing Calvera at $z = +0.1$ kpc, then, yields a distance of $d < 0.17$ kpc and a 2–10 keV X-ray luminosity $L_X < 1.6 \times 10^{30}$ erg s⁻¹, a factor of 10^5 times less luminous than the standard-candle luminosity (Durant & van Kerkwijk 2006) and 10^3 times less luminous than the next-faintest known magnetar (Munro et al. 2006).

Calvera, if it is a magnetar, is thus observationally distinguished from all other known magnetars, having either an anomalously small luminosity or an anomalously large Galactic altitude. We thus consider the magnetar hypothesis strongly disfavored.

3.1.3. Compact Central Object

The compact central object (CCO) of Cas A (Pavlov et al. 2000) is one of several point-like X-ray sources in the centers of Galactic supernova remnants (SNRs) that have similar spectral properties (Slane et al. 1999; Pavlov et al. 2001; Park et al. 2006). The Cas A CCO is observed with $kT_{\text{eff}} = 490$ eV and emission radius $R_{\text{bb}} = 0.29_{-0.09}^{+0.16}$ km at the distance of

Cas A, $d = 3.4$ kpc. It is unclear why CCOs have apparently smaller R_{bb} than magnetars and INs. The small blackbody radii of the CCO sources are inconsistent, in all current theoretical scenarios, with uniform emission from the full surface of a neutron star. A small radius would be expected if these sources emit the majority of their X-ray radiation from hot polar caps covering a fraction of the NS surface; however, the absence of detected pulsations from the CCOs (with the exception of RX J121000.8–522625) casts some doubt on this interpretation. As an alternative, it has been suggested that the CCOs may be accreting black holes.

While the unique class-defining characteristic of a CCO is association with a SNR, and there is no known SNR within 2 deg of Calvera, we may consider the possibility that Calvera is the first “unhosted” CCO.

If we assume a three-dimensional space velocity for Calvera equal to the $v = 380$ km s⁻¹ average for radio pulsars (Faucher-Giguère & Kaspi 2006), and an age appropriate to the cooling age for a 10^6 K NS, $\tau = 5 \times 10^5$ yr (Page et al. 2004), then we expect Calvera to have traveled 190 pc from its birthplace. Travelling at a statistical-average angle of 30° with respect to the disk, it would be expected to traverse a vertical distance $\delta z \approx 95$ pc out of the Galactic plane. Adding this distance to the stellar scale height of the Galactic disk, $z_* \approx 90$ pc, we expect it to have reached $z \approx 180$ pc by the time it has cooled to its present temperature. This would then yield a distance $d = 300$ pc, an emitting radius $R_{\text{bb}} \approx 0.16$ km, and a luminosity $L_X = 9 \times 10^{30}$ erg s⁻¹ (0.1–2.4 keV). This would make Calvera a factor of 10 fainter than the faintest known CCO, while giving it a comparable temperature and emitting radius. Such a distance is within reach of a parallax measurement with present instruments (Kaplan et al. 2007).

3.1.4. Millisecond Radio Pulsar

We compare the X-ray properties of Calvera to MSPs observed in the homogeneous survey of the MSP population of 47 Tuc (Bogdanov et al. 2006). Calvera has a similar effective temperature as these MSPs (see Fig. 3); and, for distances between 150 and 560 pc, it has a similar thermal bolometric luminosity (10^{30-31} erg s⁻¹; Fig. 2) and R_{bb} (0.08–0.3 km). The <41% r.m.s variability limit is consistent with variability limits on these MSPs (Cameron et al. 2007). Thus, the measured properties of Calvera are consistent with those of an MSP with a distance between 150 and 560 pc.

Intriguingly, one radio pulsar has previously been discovered from a similar X-ray-selected sample (Zepka et al. 1996). If Calvera is a radio pulsar, then, it would not be

unprecedented.

4. Conclusions

We have identified a new isolated compact object at high Galactic latitude ($b = +37^\circ$), Calvera, via its high X-ray to optical flux ratio, $F_X/F_V > 5100$.

If Calvera is a typical INS, it would have a distance $d = 11.1$ kpc which would require a spatial velocity $v_z > 6700$ km s $^{-1}$ to reach this location in less than a cooling time $\tau_c = 1$ Myr. This velocity is much greater than the ≈ 380 km s $^{-1}$ value typical to pulsars, and even much greater than the highest directly measured velocity for a neutron star (1083_{-90}^{+103} km s $^{-1}$, Chatterjee et al. 2005) or the highest implied velocity (800-1600 km s $^{-1}$, Chatterjee & Cordes 2004). Alternatively within the typical INS hypothesis, it would have cooling time ($\tau_c \geq 17$ Myr) much longer than present cooling-time predictions.

If Calvera is a typical magnetar, its distance would be even greater than in the INS hypothesis, and therefore velocity and cooling-time implications are more disparate from the present observations and theory.

If Calvera is a CCO, it would avoid these velocity and cooling-time implications, but it would be the first such object discovered outside a SNR.

Calvera may be an ICBAS source (“It Can Be Any Size”), which implicitly is not related to any of the known classes, can have any R_{bb} and thus be at any distance and luminosity (as a function of R_{bb}). This hypothesized class of sources is simply a counter-hypothesis to the known classes, making a point of the fact that, in the absence of an assumed R_{bb} (or, equivalently, L_X), we can say nothing about Calvera’s distance or classification.

The only class of objects consistent with the demonstrated properties of Calvera are the radio pulsars; in particular, pulsars analogous to the MSPs observed in the globular cluster 47 Tuc. We therefore conclude that Calvera is most likely a radio pulsar. This could be confirmed by detection of radio pulsations from this source.

If Calvera is a new (perhaps fast) radio pulsar, it would be an observationally useful object. It exhibits 60% of the X-ray flux of the X-ray-brightest and second closest millisecond radio pulsar, PSR J0437–4715 (Zavlin 2006). There are only 22 known radio pulsars within $d < 560$ pc, 10 in the northern hemisphere (Manchester et al. 2005)². If Calvera indeed turns out to be an MSP, it would be the third MSP in the northern hemisphere within $d < 560$ pc

²<http://www.atnf.csiro.au/research/pulsar/psrcat>

(after PSR J0030+0451 and PSR J1012+5307), making it a potentially useful target both for a pulsar timing array (Foster & Backer 1990) and for targeted search with the *Laser Interferometric Gravitational Wave Observatory* (LIGO; e.g. Cutler 2002).

We would like to express our gratitude to the *Swift* operations team for the fill-in target observations that made this work possible. We gratefully acknowledge Jean-Rene Roy for granting director’s discretionary time with Gemini-North for this project. We are also grateful to Harvey Tannanbaum for granting director’s discretionary time with *Chandra* for this project. RER gratefully acknowledges useful conversations with A. Cumming, an advocate of the strong ICBAS hypothesis.

REFERENCES

- Arnaud, K. A. 1996, in *Astronomical Data Analysis Software and Systems V.*, ed. G. Jacoby & J. Barnes, Vol. 101 (ASP Conf. Series), 17
- Arras, P., Cumming, A., & Thompson, C. 2004, *ApJ*, 608, L49
- Bogdanov, S., Grindlay, J. E., Heinke, C. O., Camilo, F., Freire, P. C. C., & Becker, W. 2006, *ApJ*, 646, 1104
- Burrows, D. N. et al. 2003, in *X-Ray and Gamma-Ray Telescopes and Instruments for Astronomy*. Edited by Joachim E. Truemper, Harvey D. Tananbaum. Proceedings of the SPIE, Volume 4851, pp. 1320-1325 (2003)., 1320
- Burwitz, V., Haberl, F., Neuhäuser, R., Predehl, P., Trümper, J., & Zavlin, V. E. 2003, *A&A*, 399, 1109
- Cameron, P. B., Rutledge, R. E., Camilo, F., Bildsten, L., Ransom, S. M., & Kulkarni, S. R. 2007, *ApJ*, 660, 587
- Carter, C., Karovska, M., Jerius, D., Glotfelty, K., & Beikman, S. 2003, in *Astronomical Society of the Pacific Conference Series*, Vol. 295, *Astronomical Data Analysis Software and Systems XII*, ed. H. E. Payne, R. I. Jedrzejewski, & R. N. Hook, 477–+
- Chatterjee, S. & Cordes, J. M. 2004, *ApJ*, 600, L51
- Chatterjee, S. et al. 2005, *ApJ*, 630, L61
- Cutler, C. 2002, *Phys. Rev. D*, 66, 084025

- Dickey, J. M. & Lockman, F. J. 1990, *ARA&A*, 28, 215
- Durant, M. & van Kerkwijk, M. H. 2006, *ApJ*, 650, 1070
- Faucher-Giguère, C.-A. & Kaspi, V. M. 2006, *ApJ*, 643, 332
- Foster, R. S. & Backer, D. C. 1990, *ApJ*, 361, 300
- Fox, D. B. 2004, *ArXiv Astrophysics e-prints*, astro-ph/0403261
- Gehrels, N. et al. 2004, *ApJ*, 611, 1005
- Haberl, F. 2005, in *5 years of Science with XMM-Newton*, ed. U. G. Briel, S. Sembay, & A. Read, 39
- Haberl, F. 2006, *ArXiv.org*, astro-ph/0609066, 1
- Haberl, F., Motch, C., Buckley, D. A. H., Zickgraf, F. J., & Pietsch, W. 1997, *A&A*, 326, 662
- Haberl, F. et al. 2004, *A&A*, 424, 635
- Ho, W. C. G., Kaplan, D. L., Chang, P., van Adelsberg, M., & Potekhin, A. Y. 2007, *MNRAS*, 375, 821
- Hui, C. Y. & Becker, W. 2006, *A&A*, 454, 543
- Kaplan, D. L., van Kerkwijk, M. H., & Anderson, J. 2002, *ApJ*, 571, 447
- 2007, *ArXiv Astrophysics e-prints*, astro-ph/0703343
- Lattimer, J. M. & Prakash, M. 2004, *Science*, 304, 536
- Manchester, R. N., Hobbs, G. B., Teoh, A., & Hobbs, M. 2005, *AJ*, 129, 1993
- Motch, C., Haberl, F., Zickgraf, F.-J., Hasinger, G., & Schwope, A. D. 1999, *A&A*, 351, 177
- Muno, M. P. et al. 2006, *ApJ*, 636, L41
- Muno, M. P., Gaensler, B. M., Clark, J. S., de Grijs, R., Pooley, D., Stevens, I. R., & Portegies Zwart, S. F. 2007, *ArXiv e-prints*, 704
- Murray, S. S., Chappell, J. H., Kenter, A. T., Kraft, R. P., Meehan, G. R., & Zombeck, M. V. 1998, in *Proc. SPIE Vol. 3356*, p. 974-984, *Space Telescopes and Instruments V*, Pierre Y. Bely; James B. Breckinridge; Eds., Vol. 3356, 974

- Page, D., Geppert, U., & Weber, F. 2006, *Nuclear Physics A*, 777, 497
- Page, D., Lattimer, J. M., Prakash, M., & Steiner, A. W. 2004, *ApJS*, 155, 623
- Page, D. & Reddy, S. 2006, Arxiv.org, astro-ph/0608360, *annu. Rev. Nucl. & Part. Sci.*, in press
- Park, S., Mori, K., Kargaltsev, O., Slane, P. O., Hughes, J. P., Burrows, D. N., Garmire, G. P., & Pavlov, G. G. 2006, *ApJ*, 653, L37
- Pavlov, G. G., Sanwal, D., Kızıltan, B., & Garmire, G. P. 2001, *ApJ*, 559, L131
- Pavlov, G. G., Zavlin, V. E., Aschenbach, B., Trümper, J., & Sanwal, D. 2000, *ApJ*, 531, L53
- Pons, J. A., Walter, F. M., Lattimer, J. M., Prakash, M., Neuhäuser, R., & An, P. 2002, *ApJ*, 564, 981
- Roming, P. W. et al. 2000, in *Proc. SPIE Vol. 4140*, p. 76-86, *X-Ray and Gamma-Ray Instrumentation for Astronomy XI*, Kathryn A. Flanagan; Oswald H. Siegmund; Eds., 76
- Rutledge, R. E., Brunner, R. J., Prince, T. A., & Lonsdale, C. 2000, *ApJS*, 131, 335
- Rutledge, R. E., Fox, D. W., Bogosavljevic, M., & Mahabal, A. 2003, *ApJ*, 598, 458
- Schwope, A. D., Hasinger, G., Schwarz, R., Haberl, F., & Schmidt, M. 1999, *A&A*, 341, L51
- Slane, P., Gaensler, B. M., Dame, T. M., Hughes, J. P., Plucinsky, P. P., & Green, A. 1999, *ApJ*, 525, 357
- Taylor, J. H. & Cordes, J. M. 1993, *ApJ*, 411, 674
- Voges, W. et al. 1999, *A&A*, 349, 389
- Walter, F. M. & Lattimer, J. M. 2002, *ApJ*, 576, L145
- Walter, F. M. & Matthews, L. D. 1997, *Nature*, 389, 358
- Walter, F. M., Wolk, S. J., & Neuhauser, R. 1996, *Nature*, 379, 233
- Woods, P. M. & Thompson, C. 2006, *Soft gamma repeaters and anomalous X-ray pulsars: magnetar candidates (Compact stellar X-ray sources)*, 547–586

Zampieri, L., Campana, S., Turolla, R., Chierigato, M., Falomo, R., Fugazza, D., Moretti, A., & Treves, A. 2001, *A&A*, 378, L5

Zavlin, V. E. 2006, *ApJ*, 638, 951

Zepka, A., Cordes, J. M., Wasserman, I., & Lundgren, S. C. 1996, *ApJ*, 456, 305

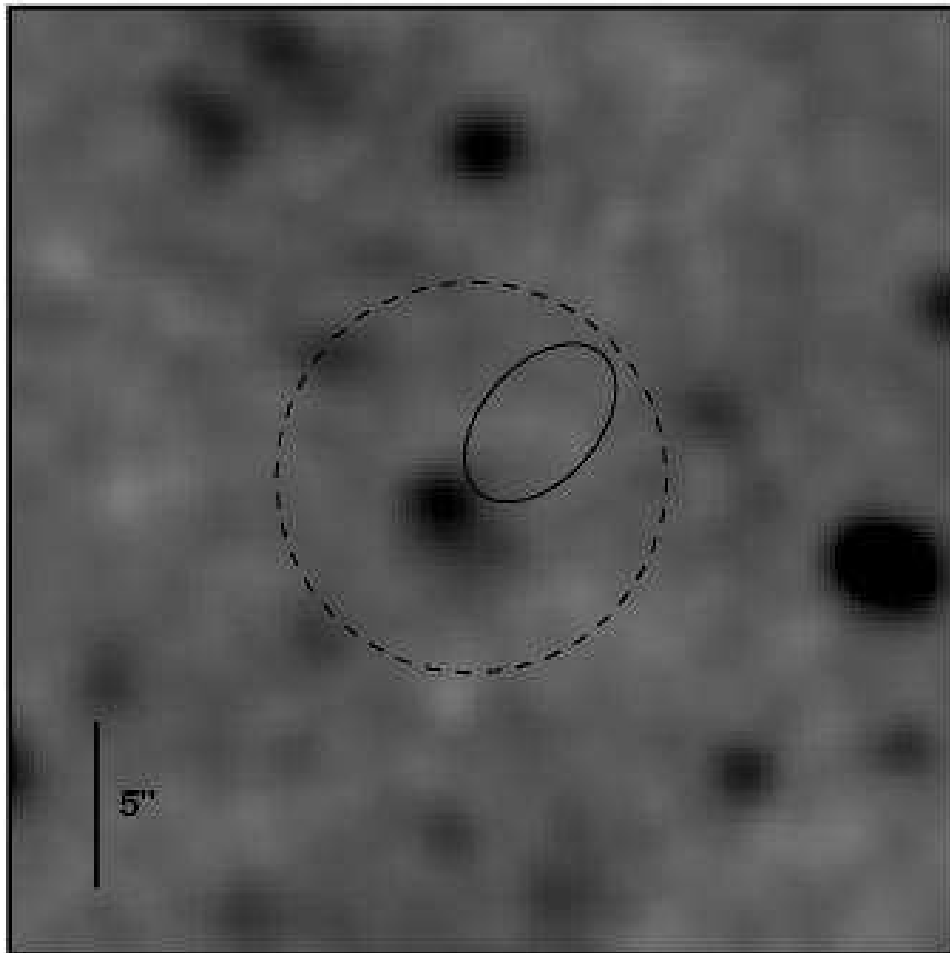


Fig. 1.— Gemini North + GMOS g -band image of the 90%-confidence X-ray (*Chandra* HRC-I) localization for Calvera (ellipse, dimensions $5.6'' \times 3.5''$), showing the absence of an optical counterpart to deep limits; the dashed circle (radius $5.9''$) indicates the 90%-confidence *Swift* XRT localization. Our three-sigma limit over the *Chandra* localization is $g > 26.3$ mag, giving $F_X/F_V > 5100$ after accounting for extinction. The image is smoothed with a PSF-like Gaussian kernel of FWHM $1.2''$ to reveal faint sources. North is up, East is to the left, and the image scale is indicated. The point source nearest Calvera, southeast of the ellipse, has $g = 24.8$ mag and is excluded as a counterpart with $>99.4\%$ confidence.

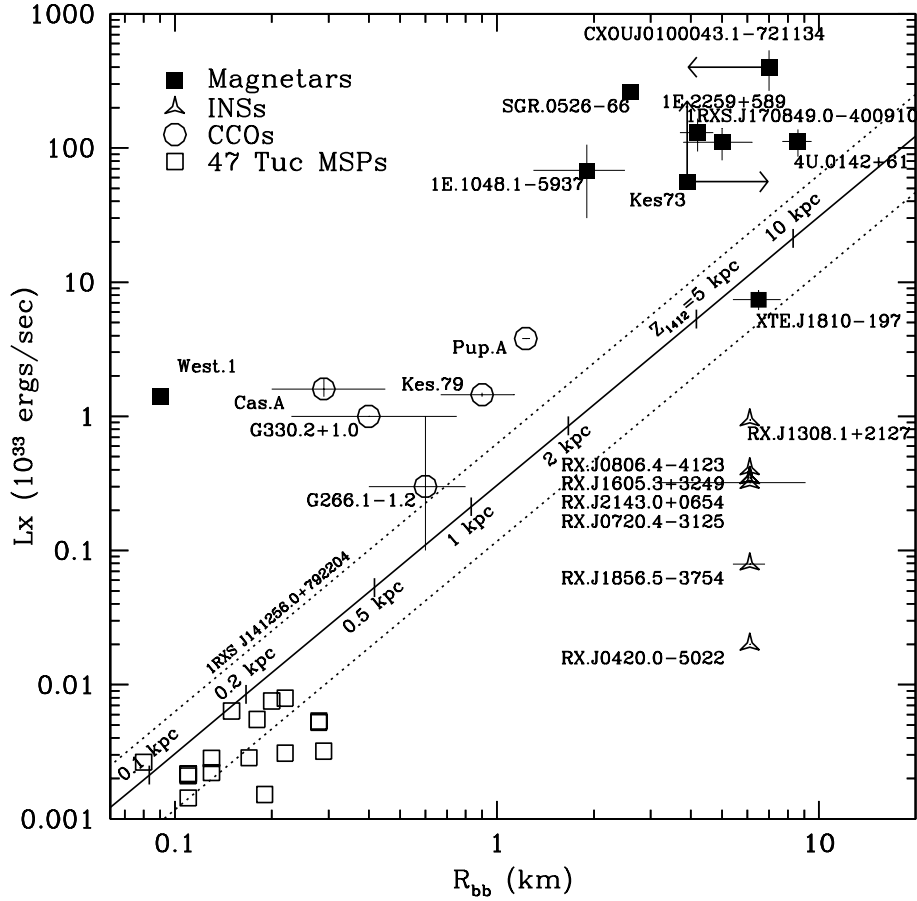


Fig. 2.— The blackbody radius R_{bb} and L_X values for magnetars (solid squares), CCOs (open circles), INSs (3-pointed stars), and MSPs in 47 Tuc (open squares). The distances of the INSs have been normalized to the parallax distance of 1RXS J185635.1–375433, assuming all have the same R_{bb} ; see Table 2 and text for details. The solid line indicates the best-fit R_{bb} vs. L_x , hash-marked with the z for Calvera; the dotted-lines contain the 90% uncertainty in R_{bb} for Calvera. Interpreting Calvera as an INS implies that it lies a vertical distance $z = 6.7$ kpc above the Galactic disk, at a Galactocentric distance of $R_c = 16.3$ kpc, well outside the disk and in the Galactic halo. Interpreting Calvera as a persistent magnetar leads to a paradox, since all other magnetars are found within a vertical distance $|z| < 0.1$ kpc of the disk, yet a large z is required for Calvera to have a luminosity ($L_X \approx 10^{35}$ erg s $^{-1}$) appropriate to the population. Even with a luminosity as low as that of the transient magnetar, XTE J1810-197, $z > 6.7$ kpc is required. Interpreting Calvera as a CCO – despite the absence of any surrounding supernova remnant – implies that it is either the faintest member of this population, or lies at a vertical distance $z \approx 1$ to 5 kpc above the disk. Calvera has L_x and R_{bb} consistent with those of the radio MSPs in 47 Tuc, if its distance is in the range 150-560 pc.

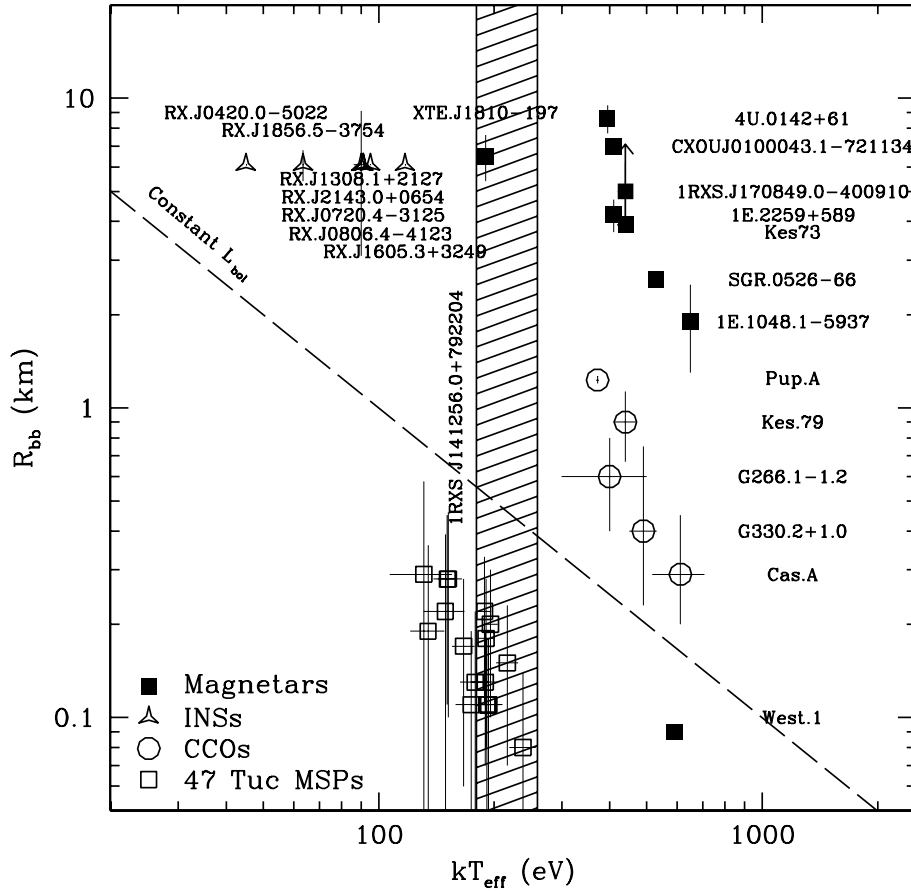


Fig. 3.— The effective temperature kT_{eff} and blackbody radius R_{bb} for magnetars, CCOs, INSs, and MSPs in 47 Tuc (see Fig. 2 and text for discussion). The hashed region indicates the kT_{eff} value for Calvera; it covers all values of R_{bb} due to the unknown distance. It overlaps kT_{eff} for the 47 Tuc MSPs, if Calvera is within a distance range of roughly 150 to 560 pc.

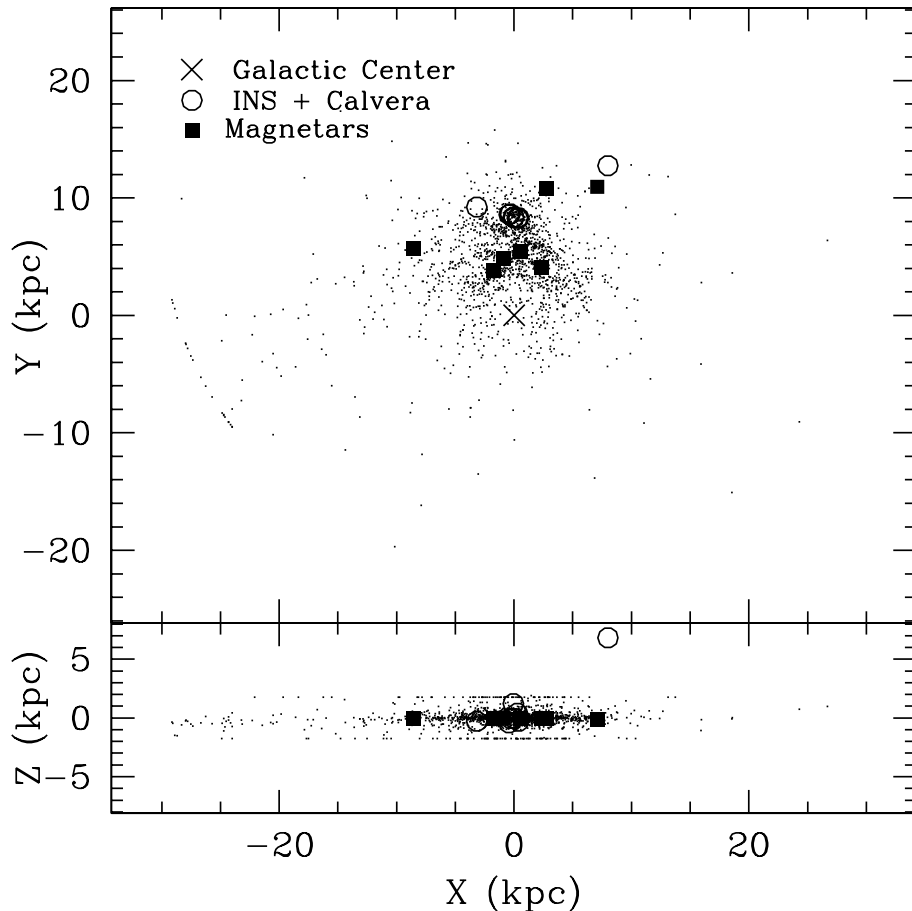


Fig. 4.— The galactic distribution of radio pulsars in the ATNF pulsar catalog (black points; Manchester et al. 2005) – with objects associated with globular clusters and known extragalactic sources removed – magnetars (solid squares; distances from Durant & van Kerkwijk 2006; Muno et al. 2006), and INSs and Calvera (assuming INSs and Calvera have the same R_{bb} ; open circles, from Table 2). The implication of interpreting all INSs as having the same R_{bb} is that they are a spatially homogeneous population – local, within the disk of the galaxy. However, including Calvera in this class places it well above the Galactic disk (bottom panel) at $z \approx 6.7$ kpc.

Table 1. Characteristics of Calvera

Characteristic	Value
Right Ascension (J2000)	14 ^h 12 ^m 55 ^s :51
Declination (J2000)	+79°22′06″.7
Uncertainty ellipse	5.6″ × 3.5″ at P.A. 137.9°
UVOT Limit	$f_{\text{UVM2}} < 1.3 \times 10^{-17} \text{ erg cm}^{-2} \text{ s}^{-1}$
Gemini Limit (3σ)	$g > 26.3 \text{ mag}$
Blackbody Energy Spectrum	
kT_{eff}	220 ⁺⁴⁵ ₋₄₀ eV
Normalization	5.4 ^{+2.7} _{-1.9} ($R_{\text{km}}/D_{10\text{kpc}}$)
Corrected X-ray Flux	$7.6 \times 10^{-13} \text{ (erg cm}^{-2} \text{ s}^{-1}; 0.1\text{--}2.4 \text{ keV)}$
N_H (fixed)	$3 \times 10^{20} \text{ cm}^{-2}$
χ^2_{ν} (dof; prob)	0.09 (2 dof; prob=0.92)
Power Law Energy Spectrum	
Photon Slope α	3.2 ^{+0.5} _{-0.4}
Corrected X-ray Flux	$7.9 \times 10^{-14} \text{ (erg cm}^{-2} \text{ s}^{-1}; 2\text{--}10 \text{ keV)}$
N_H (fixed)	$3 \times 10^{20} \text{ cm}^{-2}$
χ^2_{ν} (dof; prob)	2.71 (2 dof; prob=0.06)

Note. — Properties of the isolated neutron star Calvera (1RXS J141256.0+792204). Parameters are estimated using the X-ray spectral modeling package XSPEC v12.3.0 (Arnaud 1996). The X-ray-equivalent hydrogen column density was fixed at the value of the integrated column through the galaxy in the direction of the source (Dickey & Lockman 1990). Uncertainties are quoted at 90% confidence. X-ray fluxes are corrected for interstellar absorption. Blackbody and power-law spectral parameters are independently derived by fitting to the same *Swift* XRT data, over 0.5–10 keV.

Table 2. Galacto-centric Positions of INSS and Calvera in an INS Interpretation

Source	kT_{eff} (eV)	F_X	(l,b) (deg,deg)	X (kpc)	Y (kpc)	Z (kpc)	d (kpc)	R_c (kpc)	Refs.
1RXS J0420.0–5022	45	5	258, -44	-0.36	8.58	-0.35	0.51	8.59	1
RXJ0720.4–3125	90	100	244, -8	-0.45	8.72	-0.07	0.50	8.73	2
RXJ0806.4–4123	95	2.8	257, -5	-3.29	9.26	-0.30	3.39	9.83	3
1RXS J130848.6+212708	117	45	339, 83	-0.06	8.35	1.29	1.30	8.45	4
Calvera	220	7.6	118, 37	7.82	12.66	6.68	11.10	16.31	present
1RXS J1605.3+3249	91	88	53, 48	0.30	8.27	0.42	0.56	8.29	5
1RXS J185635.1–375433	63.5	210	359, -17	0.00	8.34	-0.05	0.167	8.34	6
1RXS J214303.7+065419	91	87	63, -33	0.42	8.29	-0.31	0.56	8.30	7

Note. — Galactic positions of the seven INSSs, plus Calvera, under the assumption all have the same R_{bb} as 1RXS J185635.1–375433 at a distance of 167 pc (see text). Reading across the columns, we give the source name, the measured effective temperature, the X-ray flux in units of 10^{-13} erg cm $^{-2}$ s $^{-1}$ (0.1 – 2.4 keV); the galactic longitude and latitude (l,b); the resulting galactic three dimensional coordinates X , Y , and Z , where (0,0,0) is Galactic Center, and (0,8.5,0) is the Sun’s location (Taylor & Cordes 1993); the source’s distance from the Sun d ; and galacto-centric distance R_c , with the relevant references. These positions are plotted in Fig. 4.

References. — 1, Haberl et al. (2004); 2, Haberl (2006); 3, Haberl et al. (2004); 4, Schwöpe et al. (1999); 5, Motch et al. (1999); 6, Burwitz et al. (2003); Kaplan et al. (2007); 7, Zampieri et al. (2001)